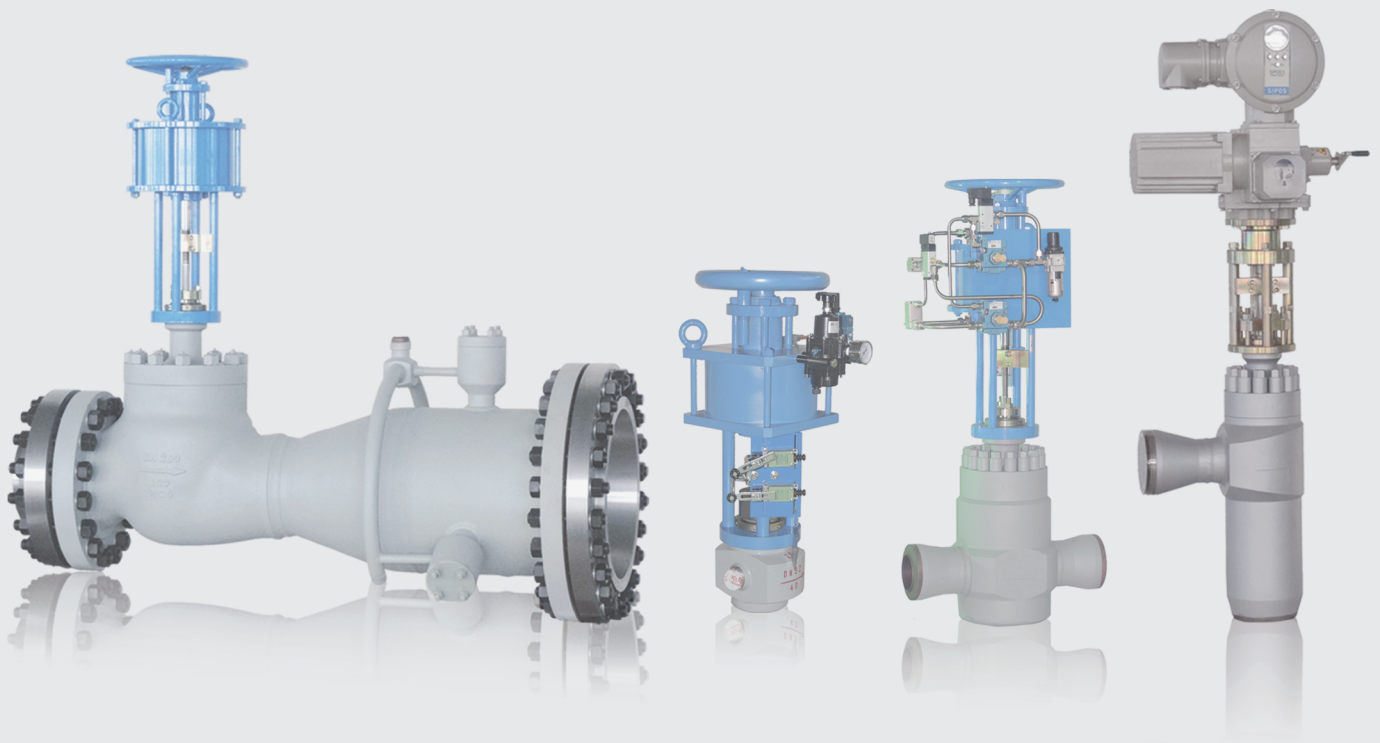




独创的技术  
可靠的质量

Creative Technology  
& Reliable Quality

# Product Overview



哈尔滨滨大阀门制造有限公司  
HARBIN BINDA VALVE MANUFACTURE CO.,LTD.

# Brief Introduction

Harbin Binda Valve Manufacture Co., Ltd. is one of the high-technology joint-stock enterprises operating in China. The company is specifically engaged in the production of control valves, steam conditioning sets, and turbine bypass valves.

Founded in 1998, our company at present has over a hundred employees, which includes a team of around twenty engineers. The main office and manufacturing plant is located at No.18 Nanhai Road Pingfang Development Dist., in the city of Harbin, China.

Our 22000 square meter plant has a large array of tools and equipment, which includes numerous CNC mills and lathes, along with an automatic welding rig. Its capabilities also extend beyond heat treatment, sandblasting, hydrodynamics (KV) tests, rigidity tests, ultrasonic thickness tests, etc.

Control valves designed by Binda have acquired numerous utility patents. The company has also been awarded the ISO9001:2008 quality assurance certificate. With reliability and innovation at the core of the company, Binda's line of products not only exceeds established global quality standards, but also the expectations of our clients worldwide.



# Product Summary

## 1. Control valves

1.1	Series TA–Multistage vortex cascade control valve .....	1
1.2	Series TB–Globe control valve .....	2
1.3	Series TY–Globe control valve with pilot valve plug .....	3
1.4	Series TJ–Stop valve style control valve .....	4
1.5	Series TJY–Stop valve style control valve with pilot valve plug .....	5
1.6	Series TZ–Steam conditioning valve .....	6

## 2. Drain valves,Stop valves(Isolation valves)

2.1	Series J–Standard drain valve .....	7
2.2	Series JC–Special drain valve .....	8
2.3	Series JG–Stop valve(Isolation valve) .....	9
2.4	Series JY–Isolation valve with pilot valve plug .....	10

## 3. Steam conditioning sets

3.1	Series BW–Desuperheater .....	11
3.2	Series BWY–Steam conditioning set .....	13

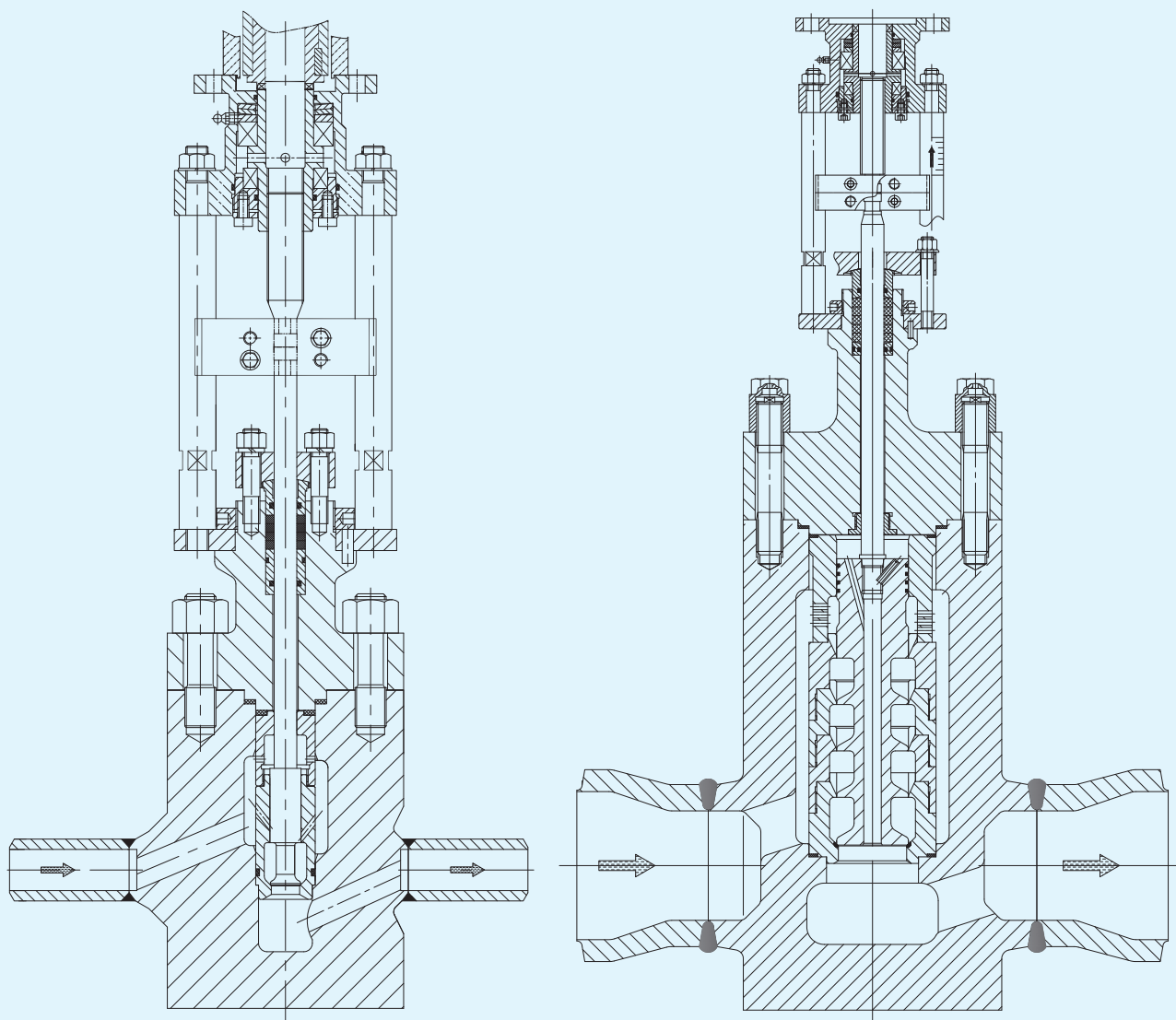
## 4. Automatic pump recirculation valves

	Series BZL–Automatic pump recirculation valve .....	15
--	---	----

## 5. Cylinder pneumatic actuators

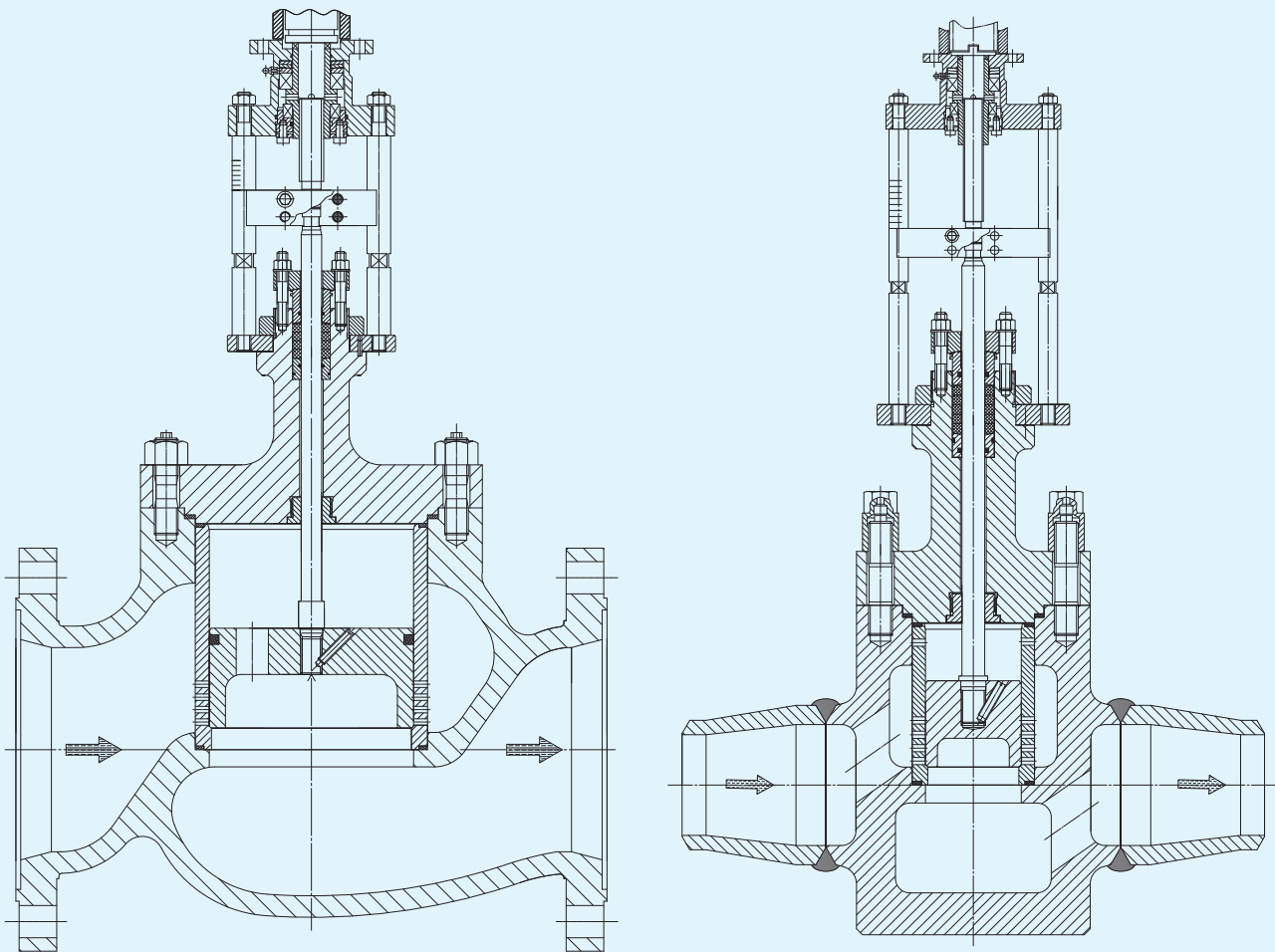
	Series BP–Cylinder pneumatic actuator .....	16
--	---	----

## 1.1 Series TA–Multistage vortex cascade control valve



- Very suitable for pressure letdown, temperature regulation, minimum flow control  
 e.g. Water injection valve for steam conditioning system  
 Control valve for boiler feedwater  
 Minimum flow valve for feedwater pump  
 Dirt water continuous discharge valve for boiler
- Forged body  
 Configuration: straight through; angle; z-shaped
- Connections: welded; flanges as an option
- Multistage vortex high pressure letdown, high wear resistance, low noise level, pulsation free operation  
 Throttling stages: 2~6, balanced and unbalanced trim  
 Leakage class: ANSI V
- DN20–DN300; –PN42MPa

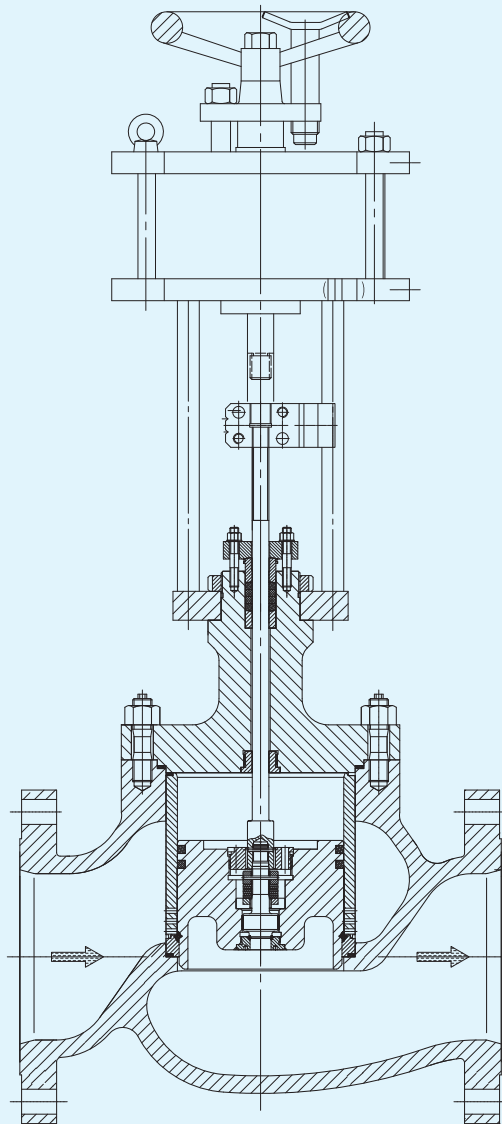
## 1.2 Series TB–Globe control valve



DN20–DN100, unbalanced trim

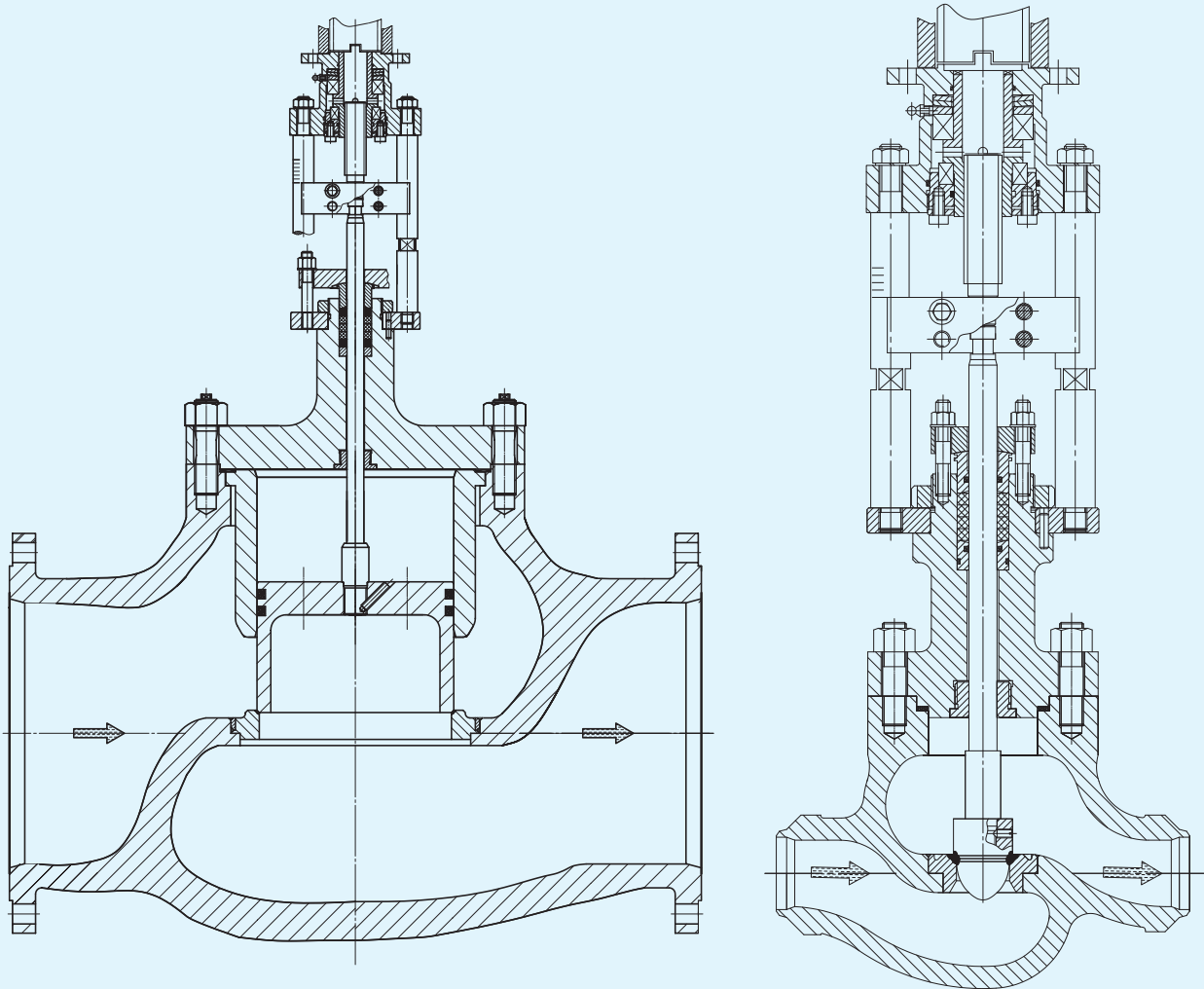
- General control valve, media: liquids or steam
  - e.g. Control valve for boiler feedwater
  - Level control valve for high (low) pressure heater
  - Control valves for condensate system
  - Steam reducing valve
- Cast body; Forged as an option
  - Configuration: straight through; angle as an option
- Connections: welded; flanges
- Large flow and low flow resistance
  - Throttling stages: 1–3, balanced and unbalanced trim
  - Leakage class: ANSI III – IV , ANSI V (unbalanced trim)
- DN50–DN1000; PN1.6–PN32MPa

### 1.3 Series TY-Globe control valve with pilot valve plug



- Excellent shut-off function, media: steam or liquids  
e.g. Sootblower valve for boiler  
Emergency relief valve for boiler  
Steam pressure reducing valve for mainsteam
- Forged or cast body  
Configuration: straight through; angle; z-shaped
- Connections: welded; flanges
- Large flow and low flow resistance  
Throttling stages: 1-3, pilot valve plug resulting in smaller actuator forces/torques and tight shut-off  
Leakage class: ANSI V
- DN80-DN1000; PN1.6-PN42MPa

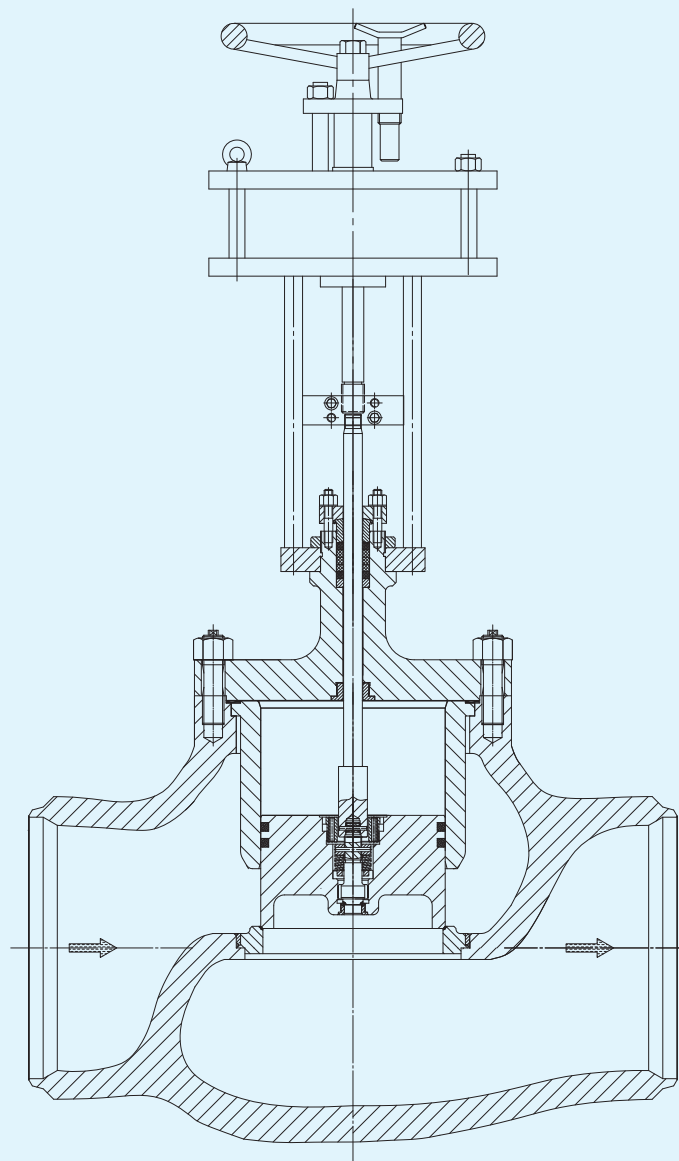
## 1.4 Series TJ–Stop valve style control valve



DN20–DN100, unbalanced trim

- General control valve, media: liquids or steam
  - e.g. Cooling water valve for oil cooler
  - Steam reducing valve for heat exchangers used in district heating
  - Auxiliary steam control valve
- Cast body
- Configuration: straight through
- Connections: welded; flanges
- Large flow and very low flow resistance
- Throttling stages: 1, balanced and unbalanced trim
- Leakage class: ANSI III – IV , ANSI V (unbalanced trim)
- DN80–DN1000; –PN6.3MPa

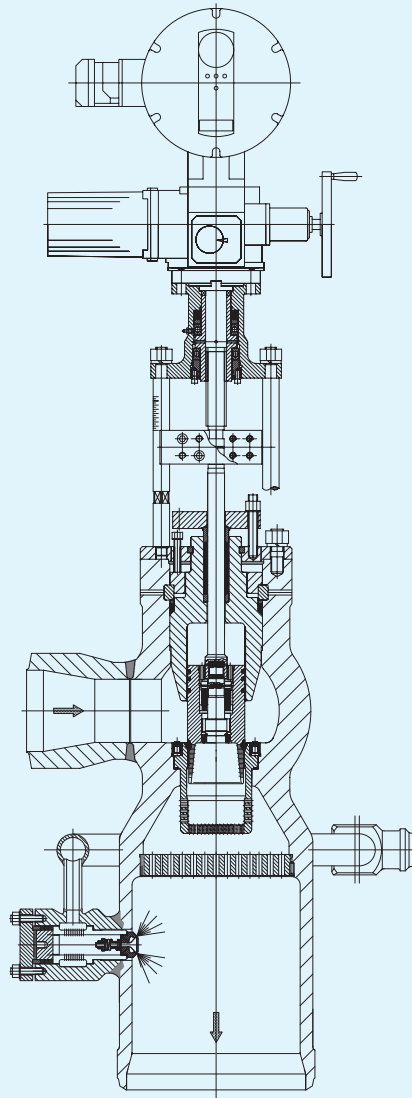
## 1.5 Series TJY–Stop valve style control valve with pilot valve plug



- Tight shut-off valve, media: liquids or steam  
e.g. Steam pressure reduction valve for turbine bypass system  
Steam isolation valve
- Cast body  
Configuration: straight through
- Connections: welded; flanges
- Large flow and low flow resistance  
Throttling stages: 1, pilot valve plug resulting in smaller actuator forces/torques and tight shut-off  
Leakage class: ANSI V
- DN80–DN1000; –PN6.3MPa

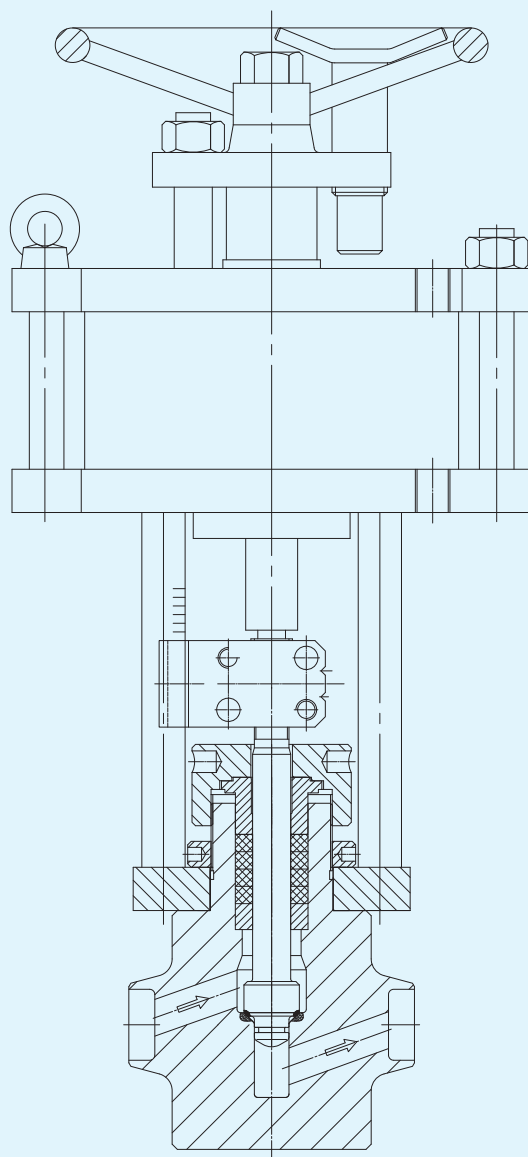


## 1.6 Series TZ–Steam conditioning valve



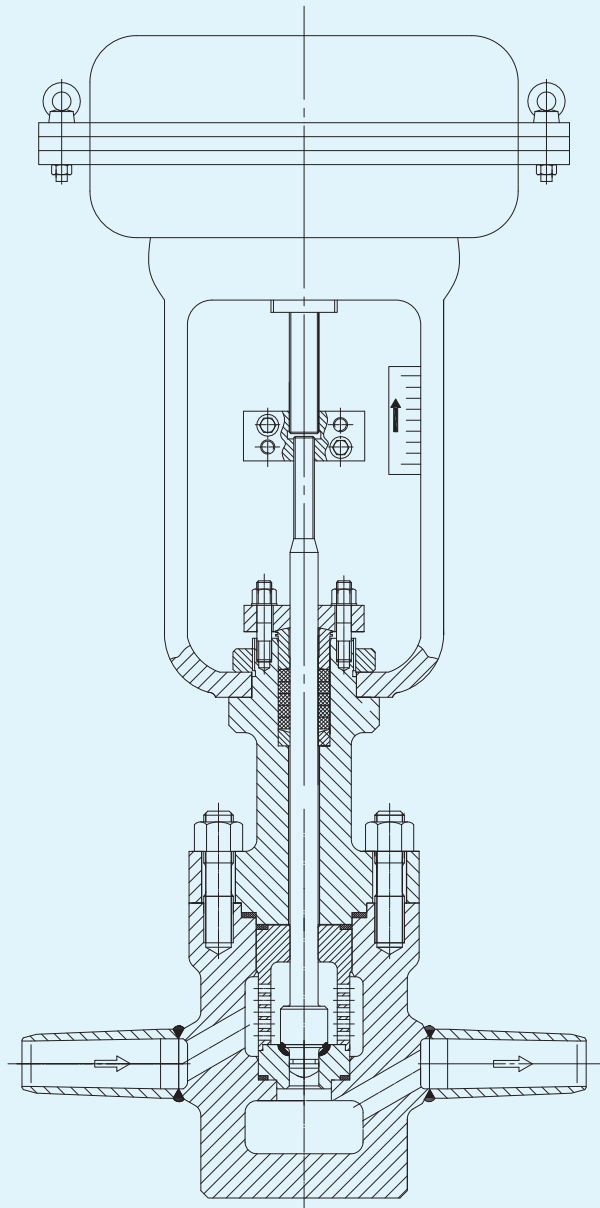
- Steam conditioning
  - e.g. High pressure steam conditioning valve for turbine
  - Low pressure steam conditioning valve for turbine
- Forged steel body
  - Configuration: angle; z-shaped; straight through as an option
- Connections: welded
- Steam pressures and temperatures are reduced simultaneously in one valve
  - Pilot valve plug, small actuator forces, tight shut-off
  - Spring nozzles atomizing cooling water very well
  - Throttling stages: 1–6 (depends on the drop of steam pressure)
  - Leakage class: ANSI V
- DN80–DN1000; –PN42MPa

## 2.1 Series J-Standard drain valve



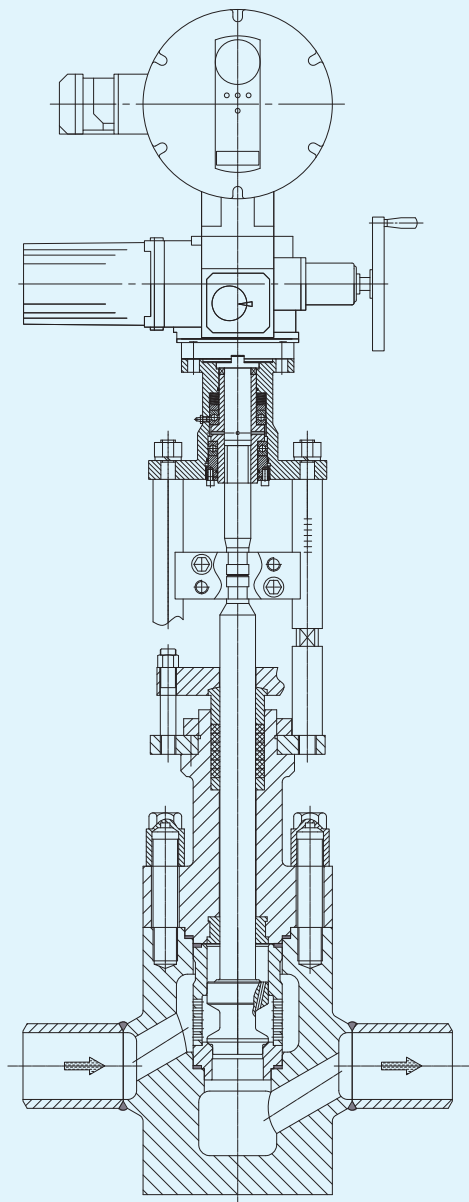
- Used for drain valve for main steam piping, reheater steam  
Medium: saturated water  
e.g. Main steam drain valve  
Auxiliary steam drain valve
- Forged steel body  
Configuration: straight through
- Connections: welded; flanges as an option
- Cavitation free design, shut off tightly for many years  
Small valve body, easy installation  
Throttling stages: 2, unbalanced trim  
Leakage class: ANSI V
- DN20–DN80; –42MPa

## 2.2 Series JC–Special drain valve



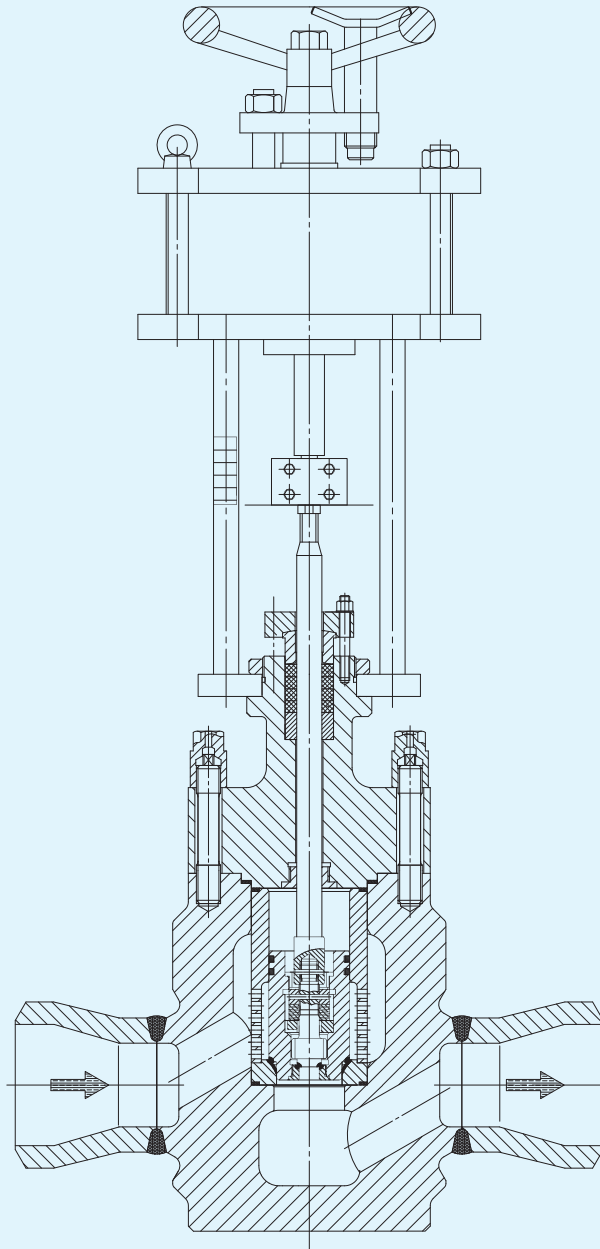
- Used for drain valve for steam piping, medium: saturated water  
e.g. Drain valve for gas turbine
- Forged body  
Configuration: straight through
- Connections: welded; flanges as an option
- Cavitation free design, tight shut-off for extended periods, inner parts can be pulled out easily on site  
Throttling stages: 2, unbalanced trim  
Leakage class: ANSI V
- DN20–DN80; –42MPa

## 2.3 Series JG–Stop valve(Isolation valve)



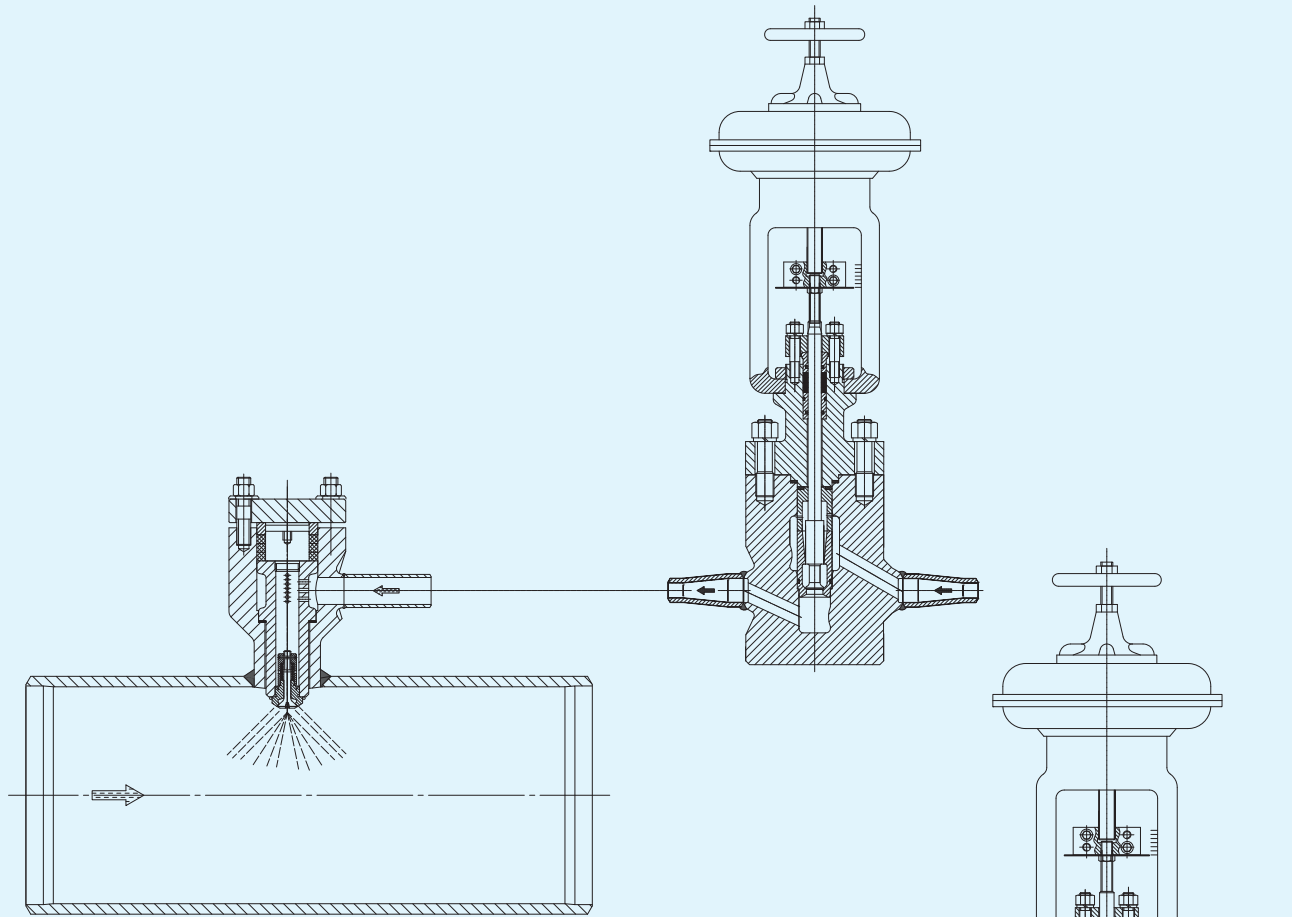
- Used for isolating supersteam or feedwater  
e.g. Feed water isolation valve  
Main valve for regular dirt discharge from boiler
- Forged steel body  
Configuration:straight through
- Connections:welded
- Wear-resisting design,shut off tightly for a long time  
Large flow and low flow resistance,internal fittings replaceable easily on site  
Throttling stages:2,unbalanced trim  
Leakage class:ANSI V
- DN50–DN100;–42MPa

## 2.4 Series JY–Isolation valve with pilot plug

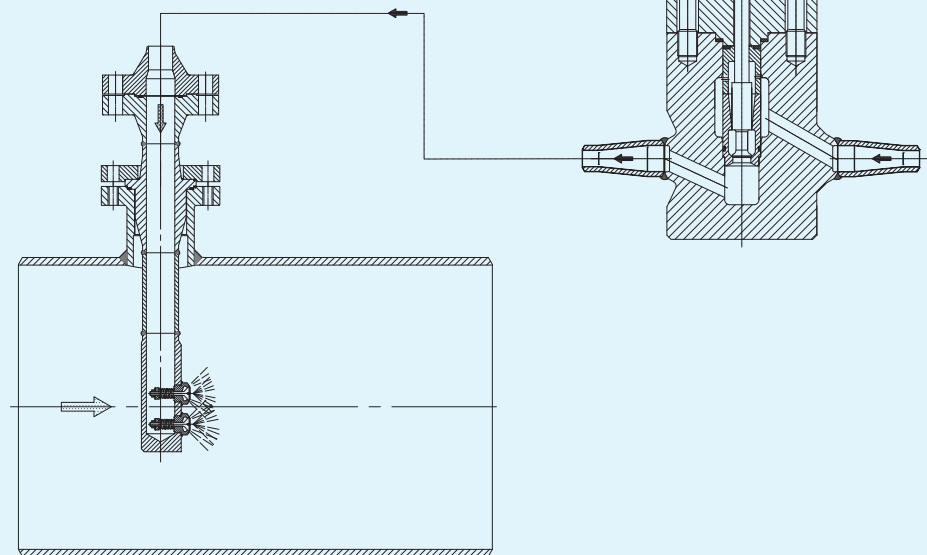


- Used for isolating high pressure steam or feedwater  
e.g. Main steam isolation valve  
Feed–water isolation valve
- Forged body  
Configuration: straight through; angle
- Connections: welded; flanges as an option
- Wear–resisting design, shut off tightly for a long time  
Throttling stages: 2, pilot valve plug  
Leakage class: ANSI V
- DN80–DN250; –42MPa

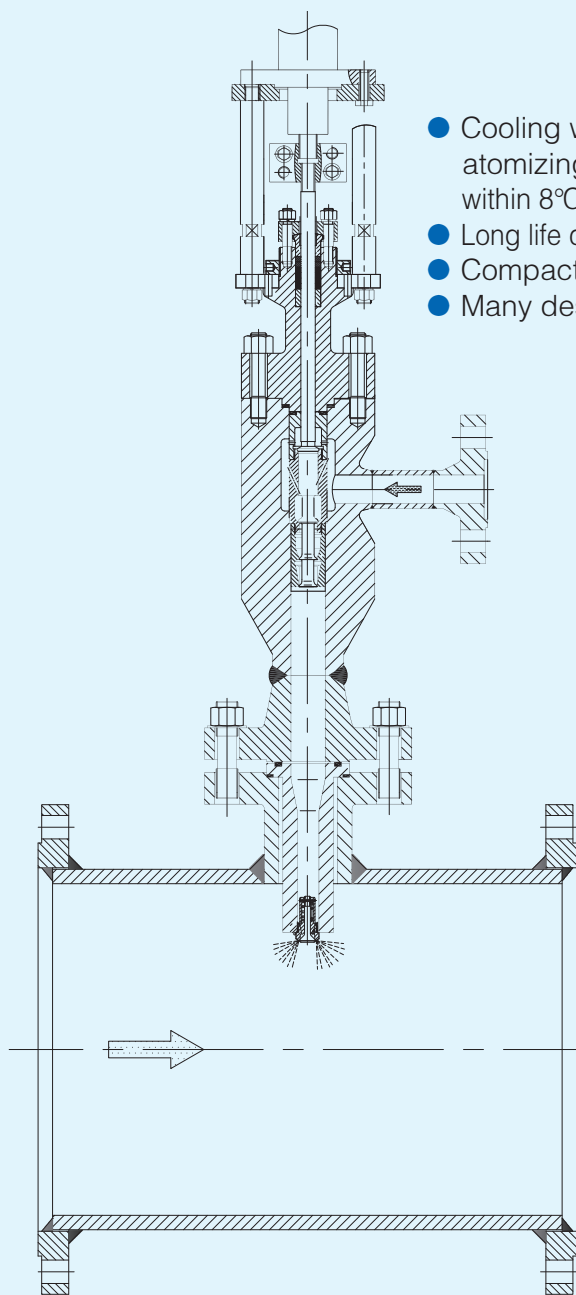
## 3.1 Series BW-Desuperheater



3.1.1 distributable desuperheater  
(atomized water spraying from pipe surface)



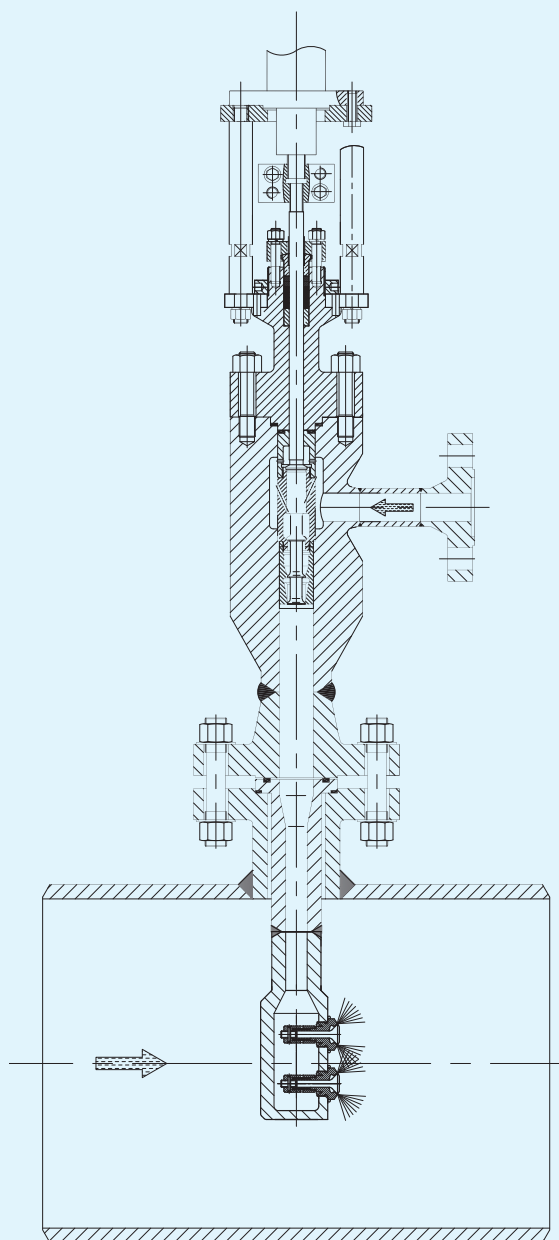
3.1.2 distributable desuperheater  
(atomized water spraying in the pipe center)



3.1.3 Integral desuperheater  
(atomized water spraying from pipe surface)

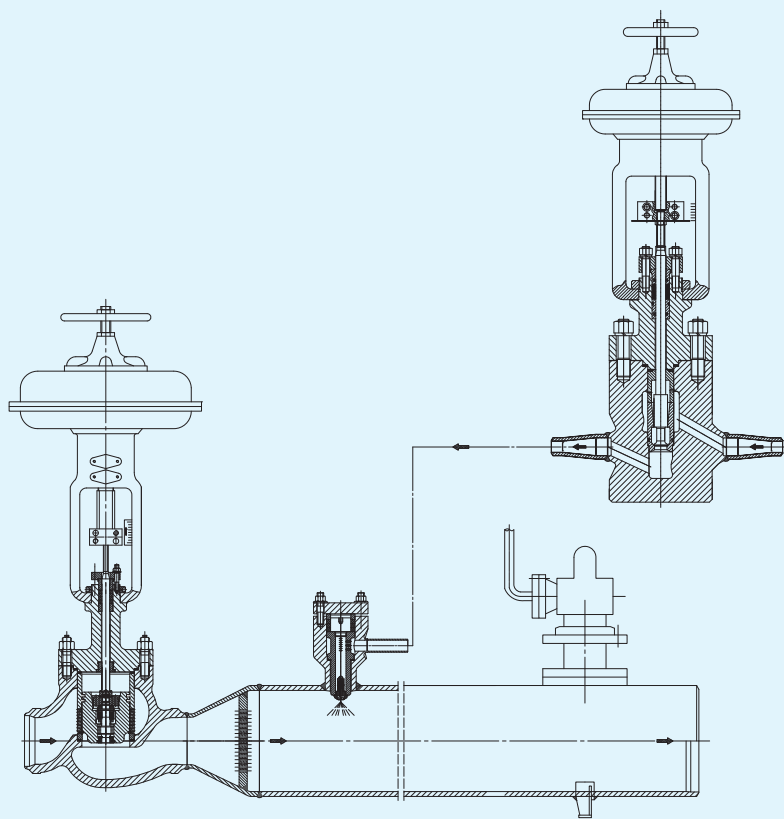
- Series TA control valve can inject cooling water accurately
- Steam pipe: DN80–DN1000  
Pressure rating: –42MPa

- Cooling water spray through spring nozzle, with excellent atomizing characteristics, control of the temperature within 8°C (14°F) above the saturation temperature is possible
- Long life design, excellent atomizing prevents the pipe from damage
- Compact construction, small space occupied
- Many design alternatives possible upon customer request



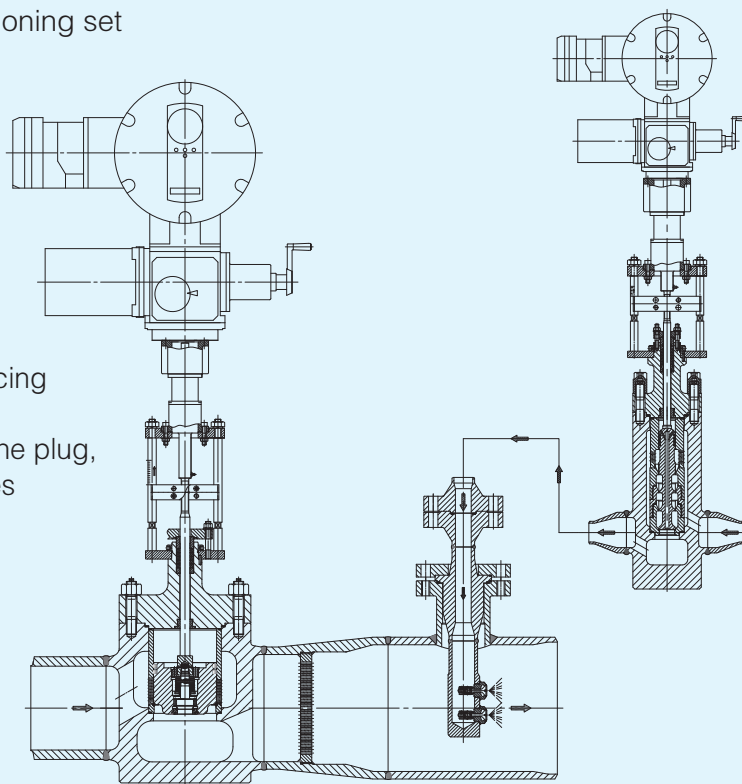
3.1.4 Integral desuperheater  
(atomized water spraying in the center)

## 3.2 Series BWY–Steam conditioning set



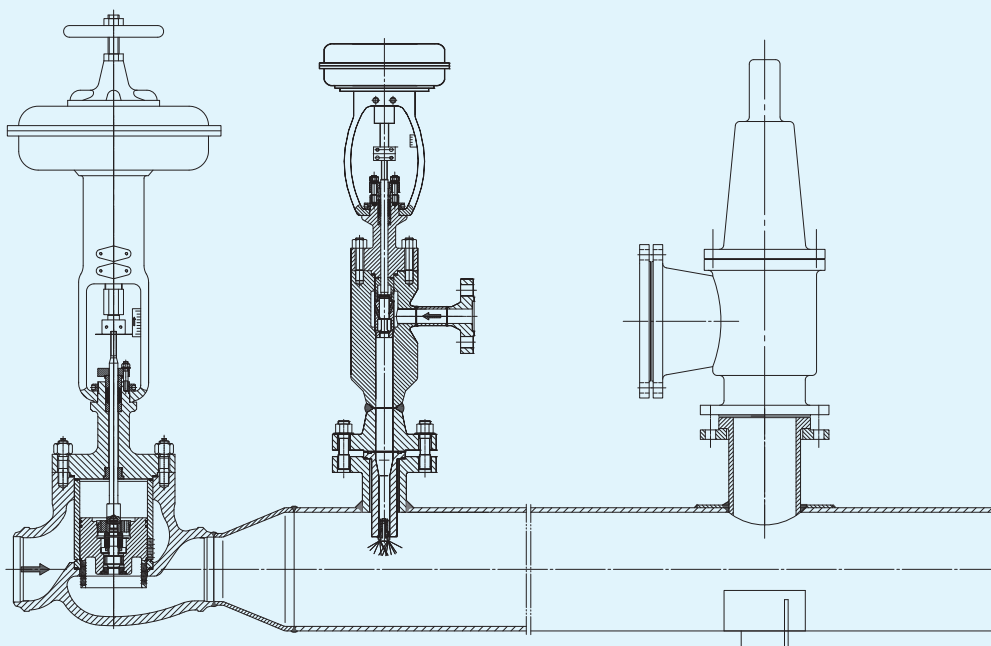
3.2.1 Distributable steam conditioning set

- All types of supersteam pressure reducing and temperature regulation
- Pressure reducing valve: pilot valve in the plug, shut off tightly and small actuator forces



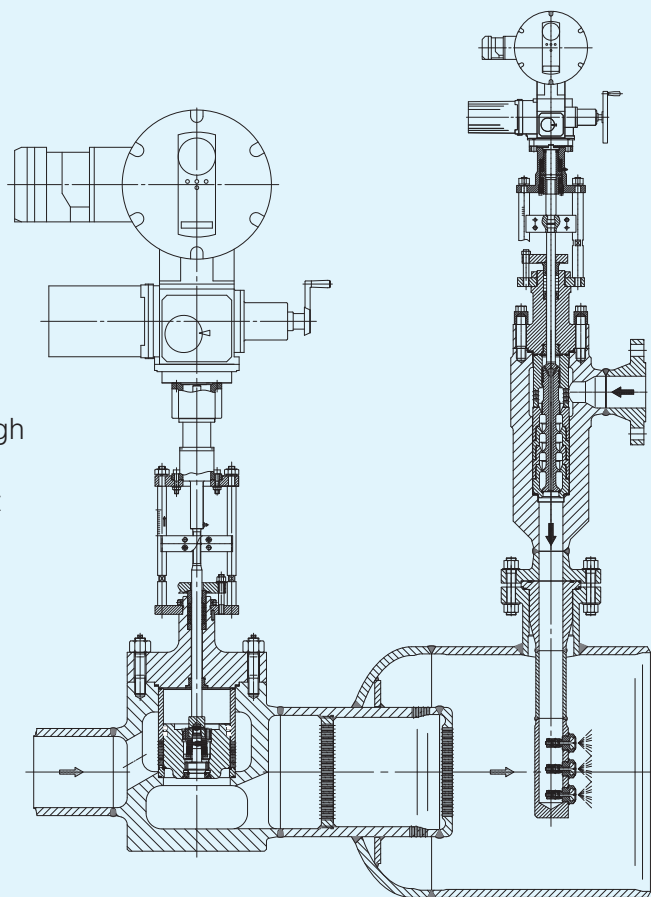
3.2.2 Distributable steam conditioning set





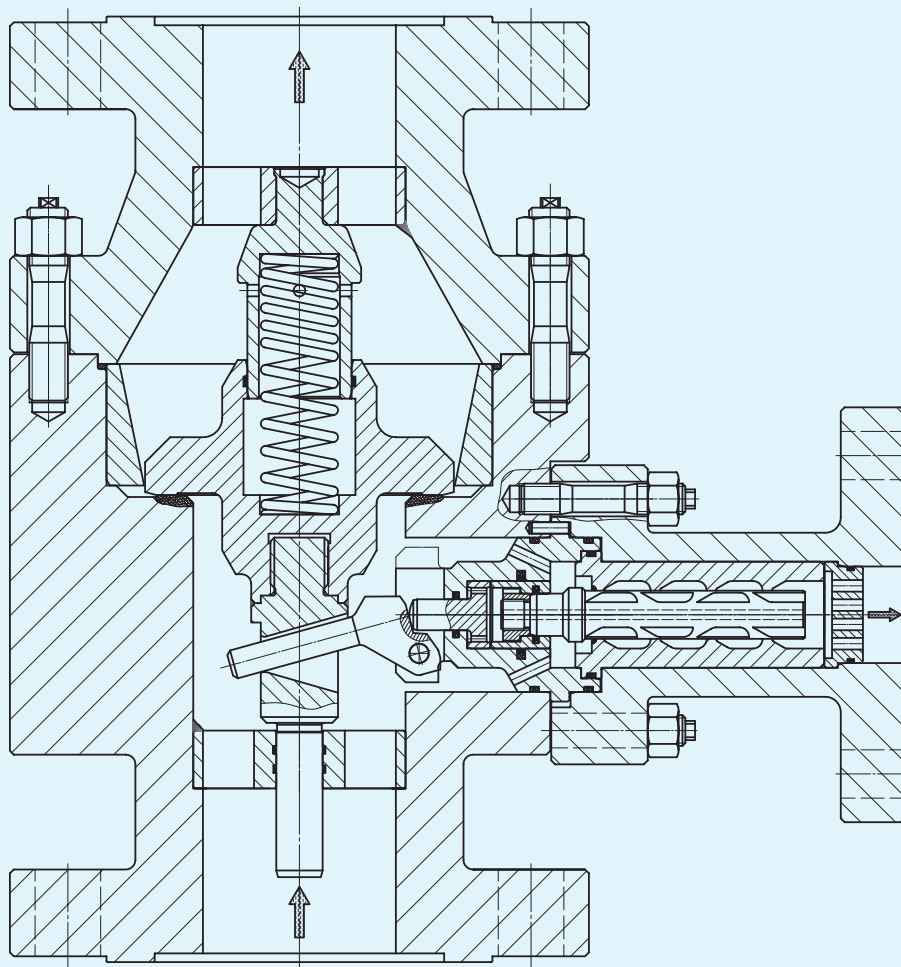
3.2.3 Integral steam conditioning set

- Injection valve: multistage vortex valve, high wear resistance and long life
- Spring nozzles, excellent atomizing effect
- Connections: welded; flanges
- Steam pipe: DN50–DN1000  
Pressure rating: –42MPa



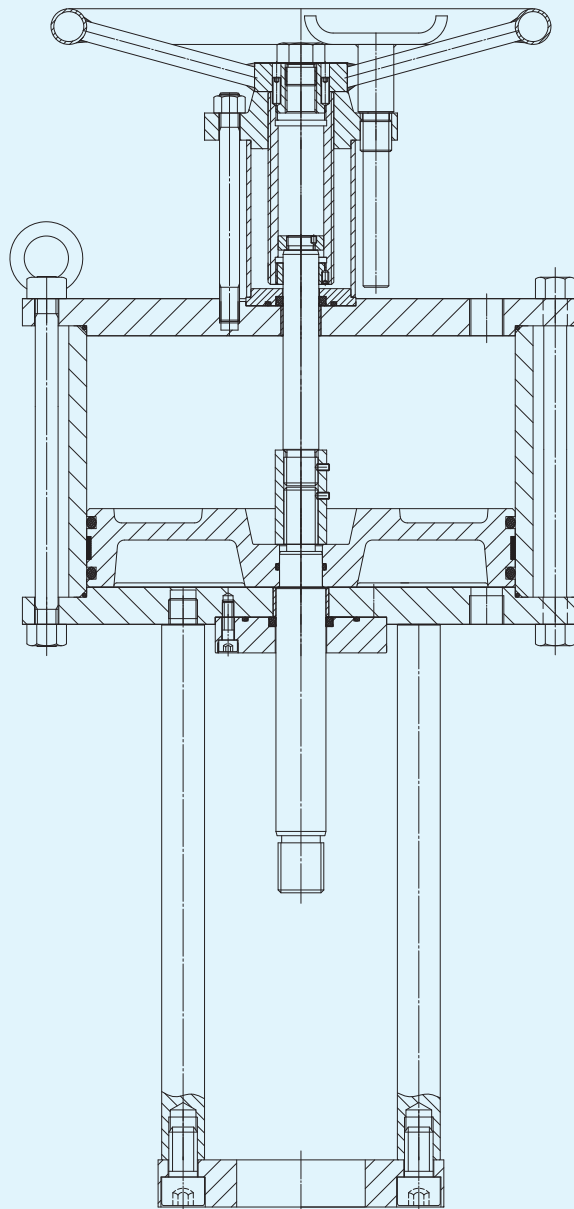
3.2.4 Integral steam conditioning set

## Series BZL–Automatic pump recirculation valve



- Own–medium controlled automatic valve,a safety element for centrifugal pumps
- Forged body
- Connections:flanges
- All valves combine four functions in one:
  - flow sensing element
  - bypass control valve
  - multistage cascade element for pressure letdown
  - check valve
- DN80–DN250;PN6.3–32MPa

## Series BP–Cylinder pneumatic actuator



- Double acting linear pneumatic actuator, it can operate all types of on–off or modulating valve with linear shaft motion
  - BP is designed and made so as to operate in the heavy work condition
  - BP actuator can be equipped with mechanical or hydraulic manual emergency device
- Operating air pressure: 5–8 bar  
Size: 200–500

◎ Main Sales Companies & Regional Offices ◎

● 张家港滨大阀门销售有限公司

Tel: 0512-58185807

Fax: 0512-58185808

● 成都滨大机电设备有限公司

Tel: 028-87535746

Fax: 028-87535749

● 太原办事处

Tel: 13935119180

Fax: 0351-4377833

● 石家庄办事处

Tel: 13933087703

Fax: 0311-85615529

**HARBIN BINDA VALVE MANUFACTURE CO.,LTD.**  
**No.18 Nanhai Road Pingfang Development Dist.Harbin China**  
**Tel:+86(0)451-86811081( 18线总机 )**  
**Fax:+86(0)451-86810418**  
**zip code:150060**  
**E-mail:bdvalve@vip.163.com**  
**Http://www.hbdfm.com.cn**